



INDOFINE Chemical Company, Inc.

121 Stryker Lane, Bldg. 30, Suite 1 • Hillsborough, NJ 08844 • U.S.A.

Phone: (908) 359-6778 • FAX: (908) 359-1179

website: www.indofinechemical.com

e-mail: chemical@indofinechemical.com

CERTIFICATE OF ANALYSIS

Catalog Number: 06-548

Product Name: **EPIMEDIN B**

CAS Number: [110623-73-9]

Lot Number: 1611909

Chemical Formula: $C_{38}H_{48}O_{19}$

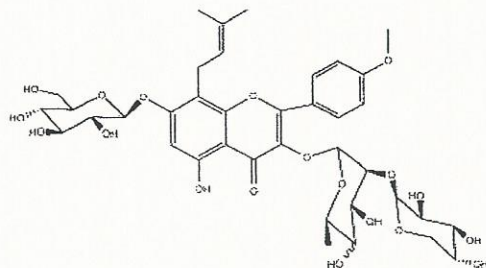
Molecular Weight: 808.78

Appearance: Yellow powder

Loss on Drying: 1.4%

Storage: Store in a cool, dry place. Protect from light.

Purity(HPLC): 99.07%





INDOFINE Chemical Company, Inc.

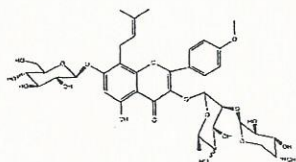
121 Stryker Lane, Bldg. 30, Suite 1 • Hillsborough, NJ 08844 • U.S.A.

Phone: (908) 359-6778 • FAX: (908) 359-1179

website: www.indofinechemical.com

e-mail: chemical@indofinechemical.com

HPLC ANALYSIS

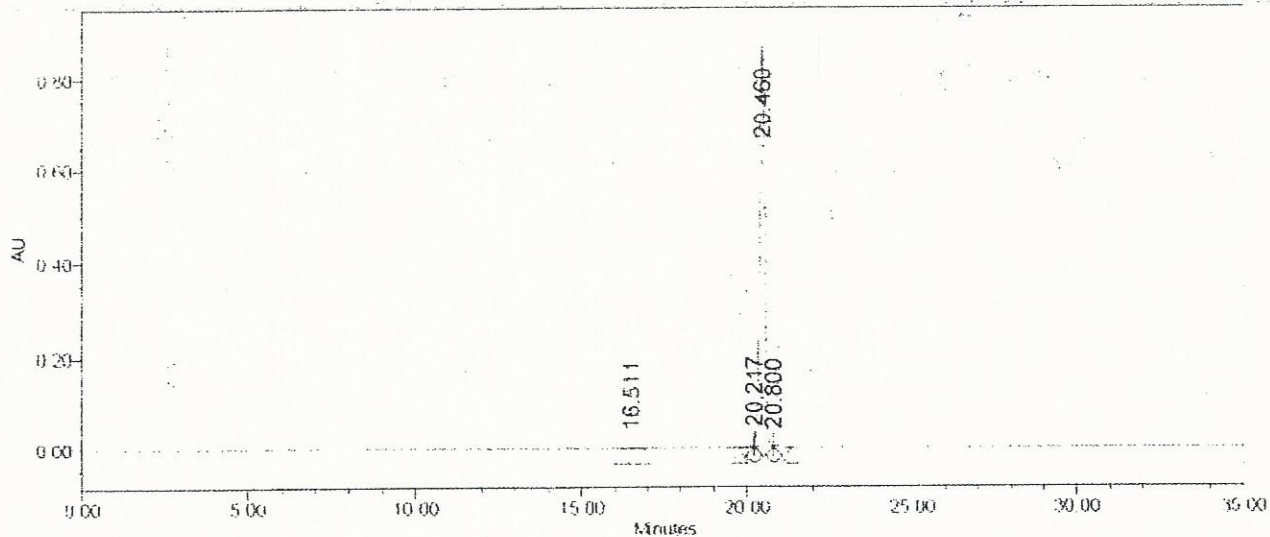


Catalog No.: 06-548
Product Name: Epimedin B
Lot No.: 1611909

SAMPLE INFORMATION

Sample Name:	Epimedin B	Acquired By:	System
Sample Type:	Unknown	Sample Set Name:	
Vial:	2	Acq. Method Set:	Epimedin C
Injection #:	1	Processing Method:	1
Injection Volume:	10.00 ul	Channel Name:	270.0nm
Run Time:	35.0 Minutes	Proc. Chnl. Descr.:	PDA 270.0 nm

Auto-Scaled Chromatogram



Peak Results

Name	RT	Area	% Area	USP Plate Count	USP Resolution
1	16.511	4050	0.04	43017.19	
2	20.217	52548	0.54		9.02
3	20.460	9598458	99.07	70854.38	0.69
4	20.800	13871	0.35		1.15